



How can we enhance the utilization of geodata in evaluations?

Claire Zanuso, AFD Impact Evaluation Unit

11/04/2024

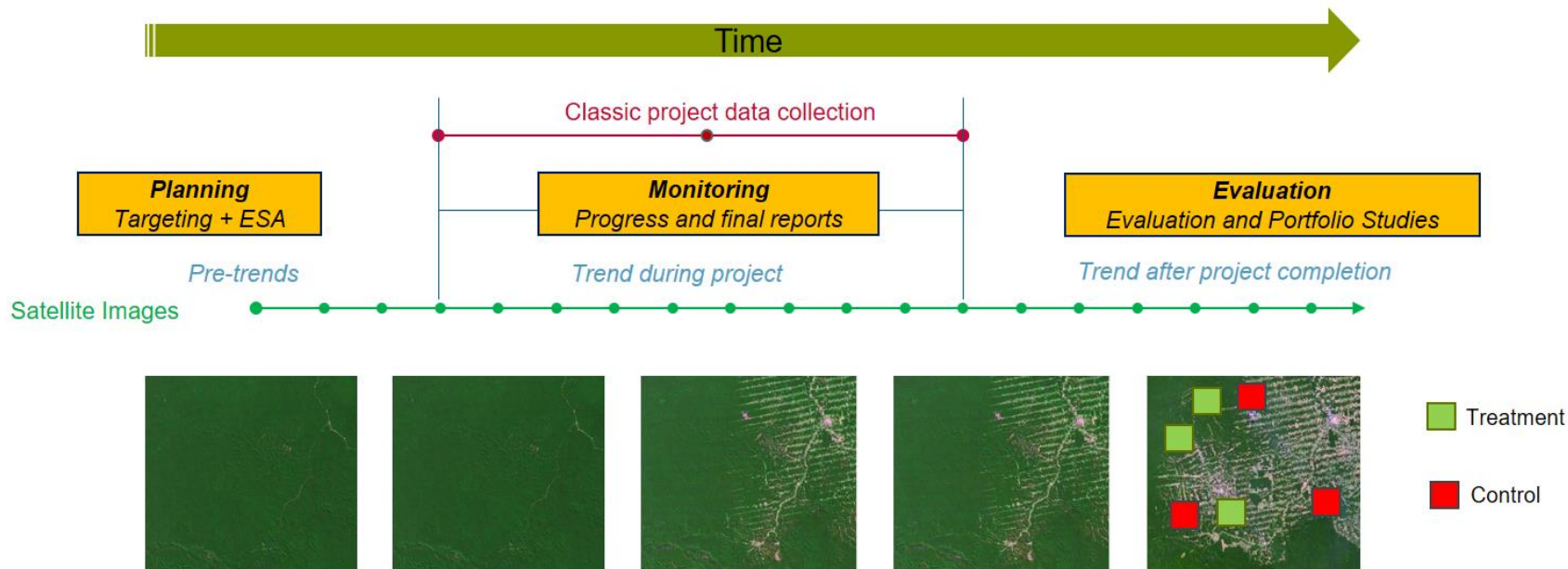
#MondeEnCommun

AGENCE FRANÇAISE DE DÉVELOPPEMENT

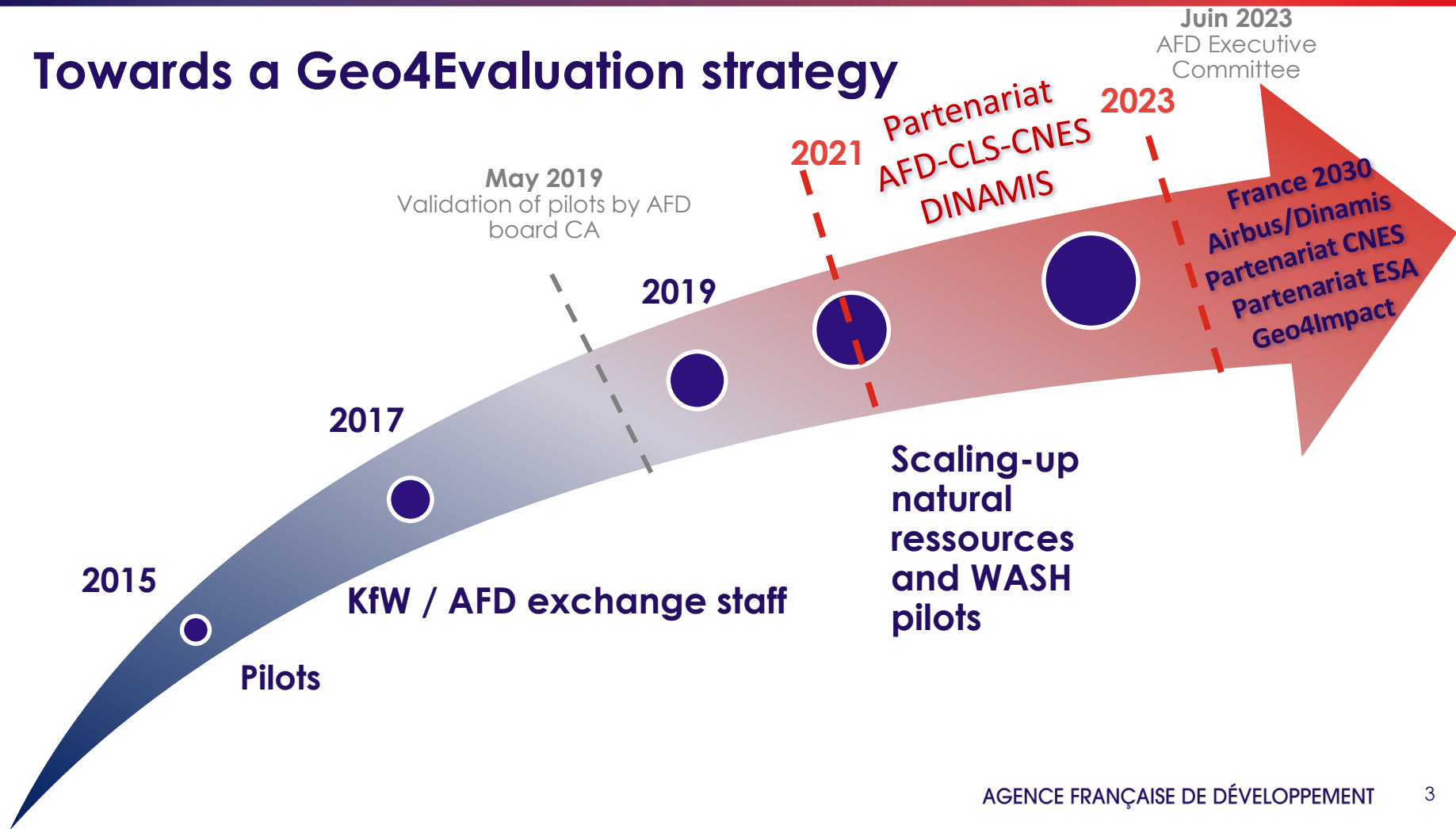
Data

Geospatial Information: *location specific, global coverage, time-series*

WHY?



Towards a Geo4Evaluation strategy



Three main components
of the strategy to
enhance the utilization
of Geodata in AFD
evaluations



1. To raise awareness

- **Events**

- Webinars
- Trainings

- **Ressources et contenus:**

- Toolbox
- ToRs types

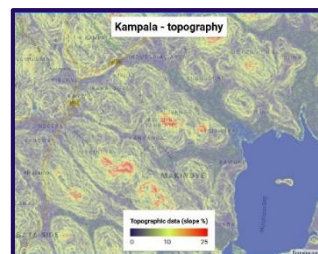
- **Tools**

(i.e. Webapps)

- **Projects & partnerships**

- Geo4Impact
- Mapme
- Dinamis

La Ruche Geodata Internal Community of Practice



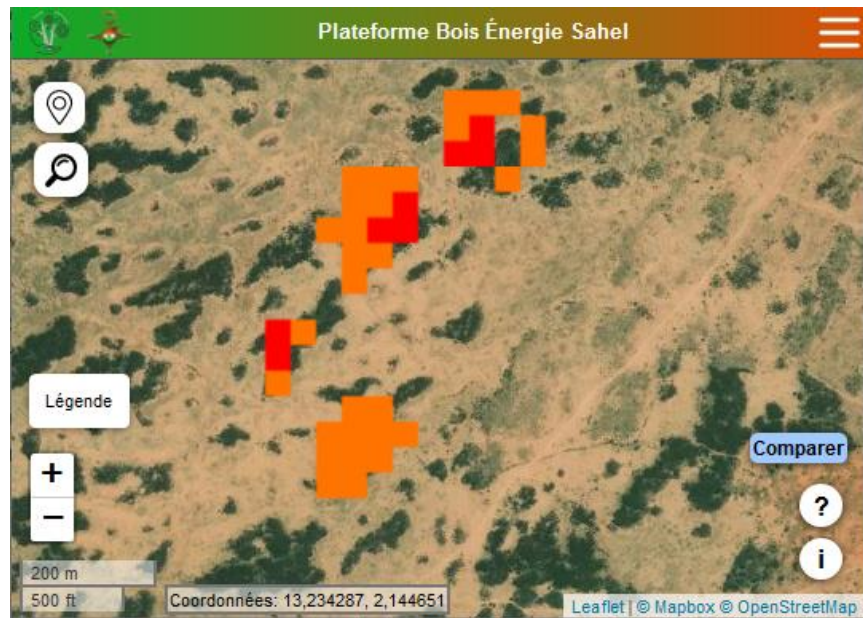
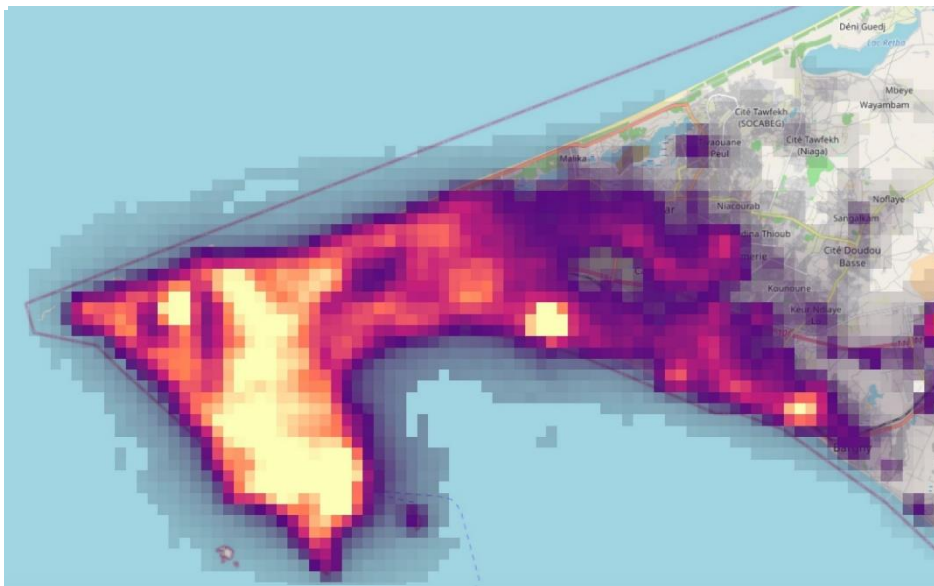
Dialogue

Instruction

Suivi

Evaluation

1 Piloting

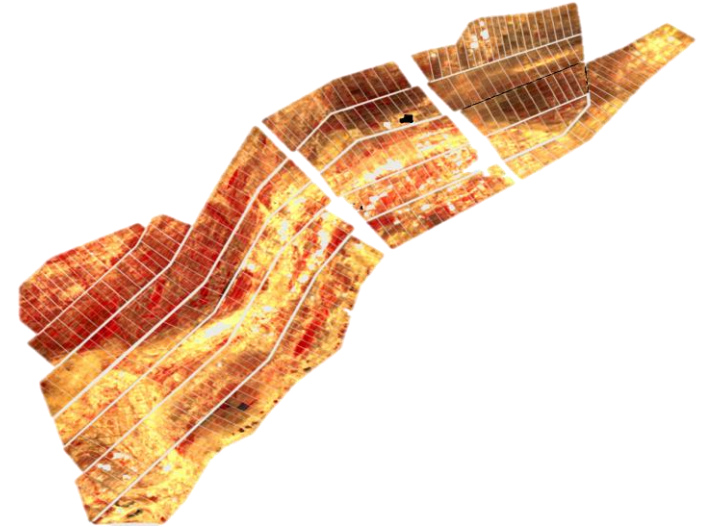


1 Learning by doing

Field data (implementation agency)



Free satellite imagery (Sentinel)



1 Learning by doing

Identify cultivated plots?



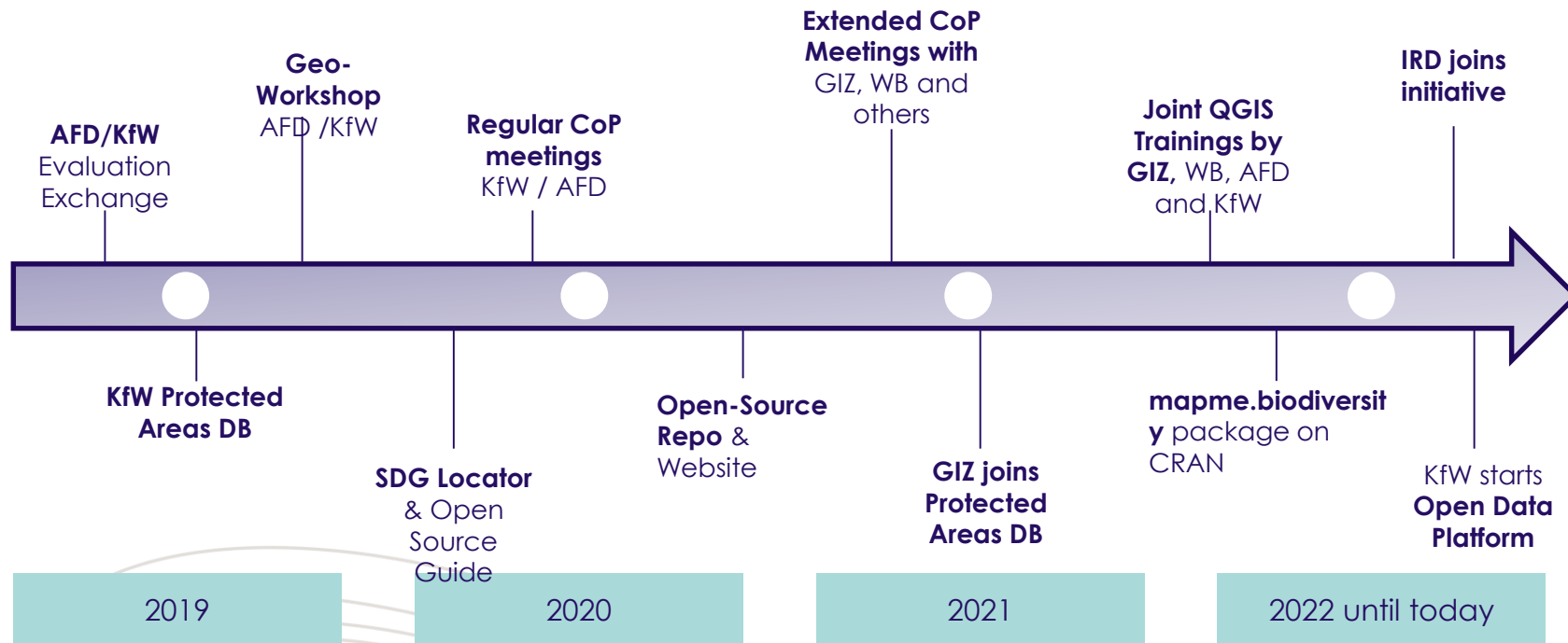
Estimate yields using the vegetation index



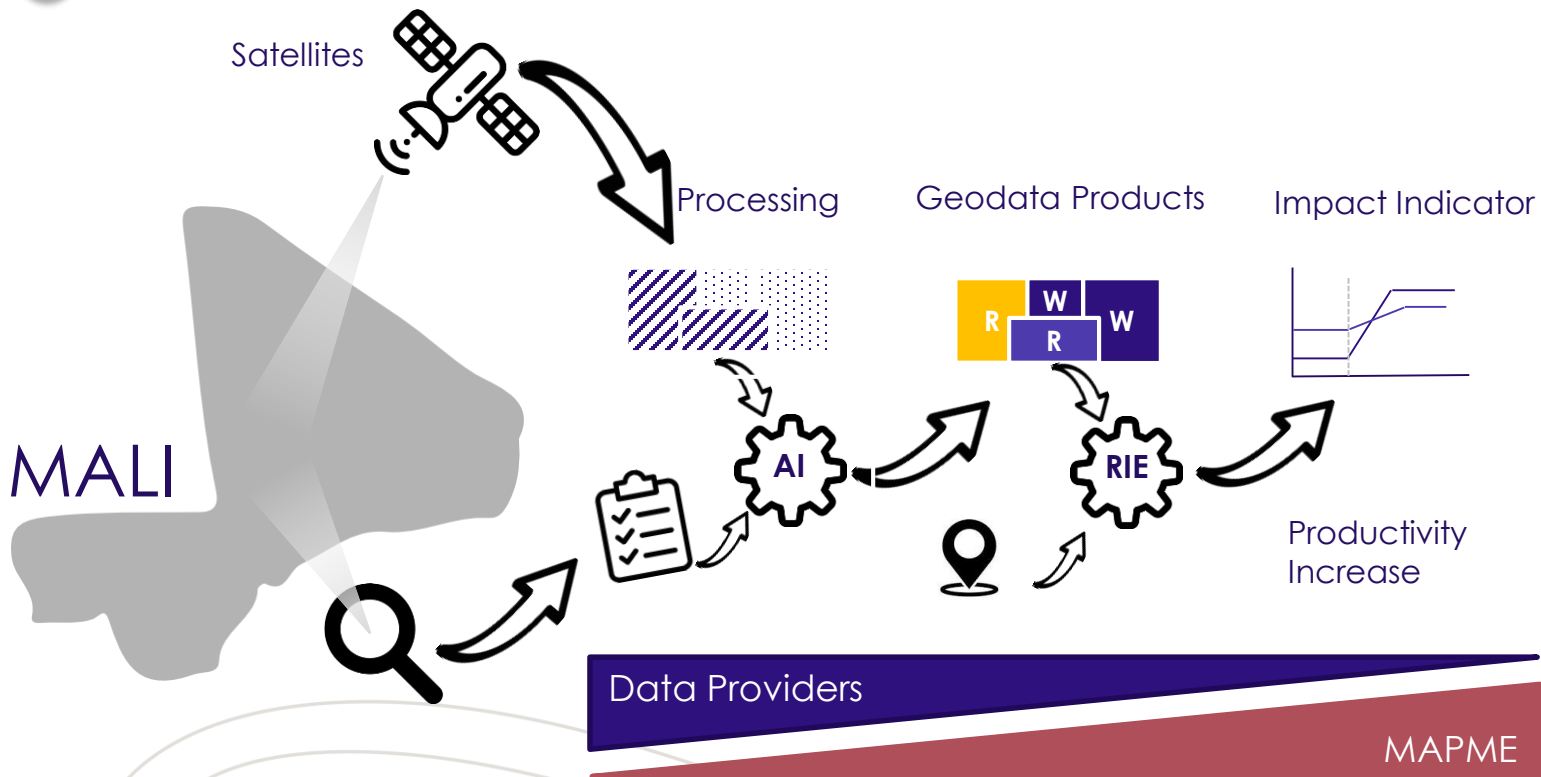
Estimate yields using the vegetation index calibrated with physical data (crop cuts)



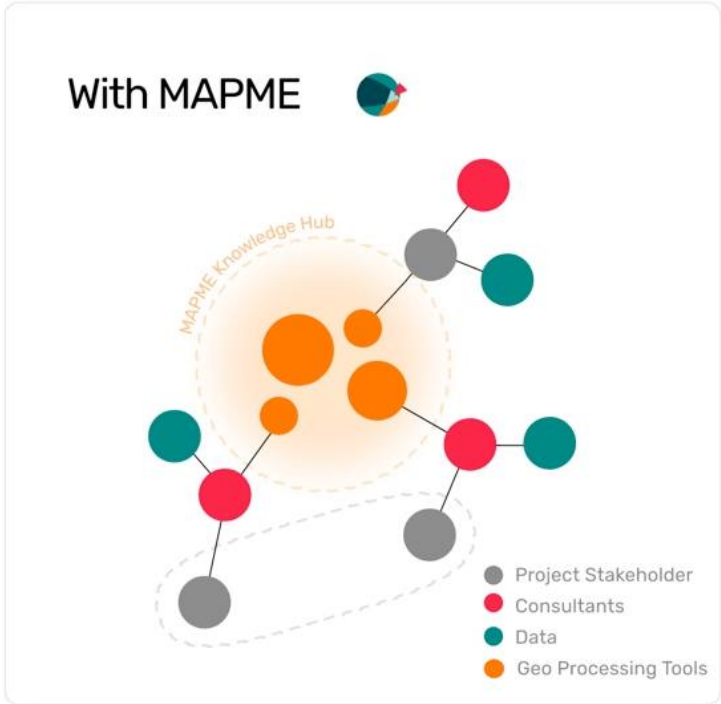
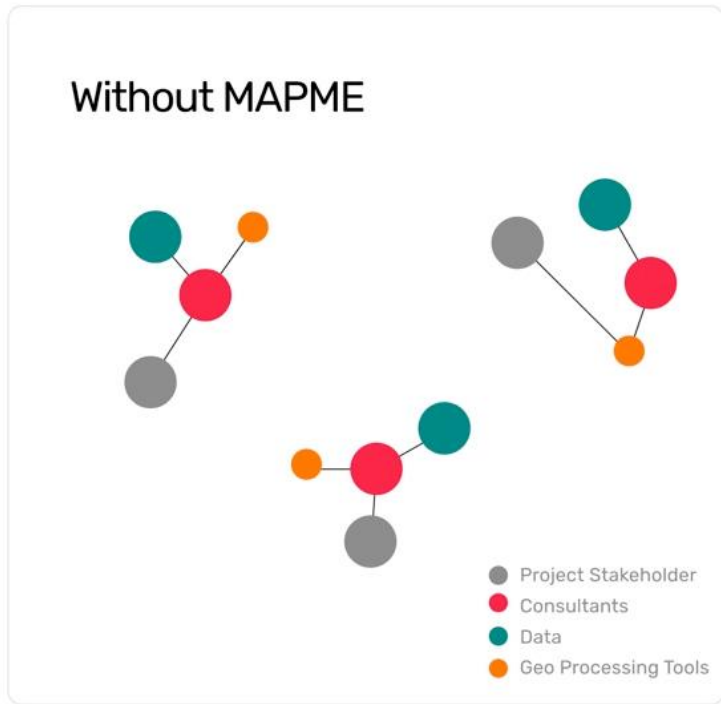
2 Partnerships from MAPME to Geo4Impact



2 Partnerships



2 Our approach: Overcome isolation & create synergies amongst multiple projects, institutions and stakeholders



In which sectors?

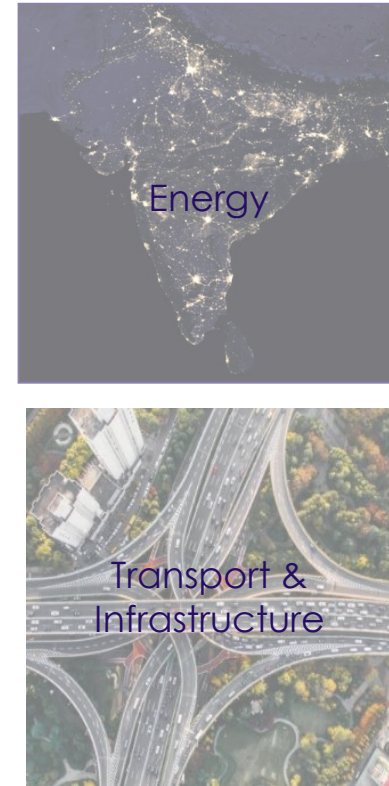
MAPMEs current focus



“New” topics

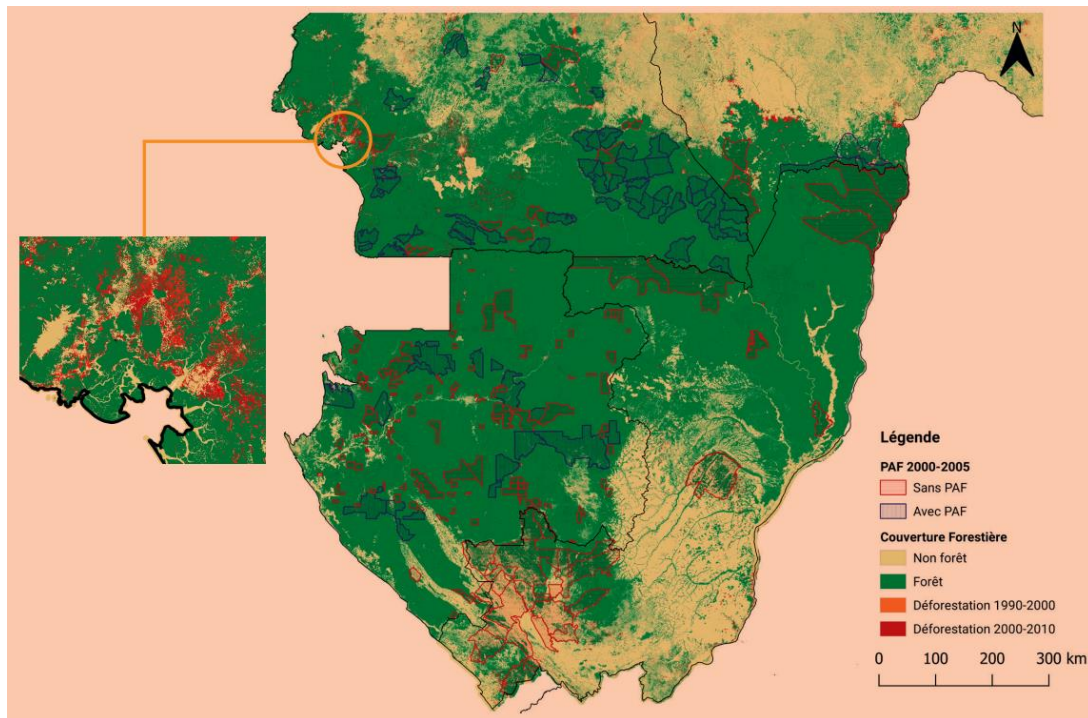


Not yet planned



...many more possibilities

3 GIE – Protected areas in Congo Basin



In the medium term, the implementation of PAFs has led to a decrease of 74% compared to the deforested area in the control concessions.